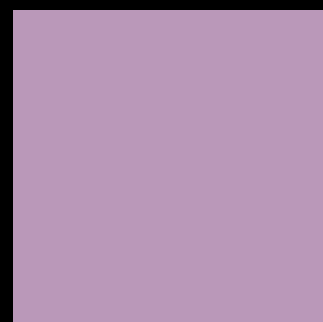
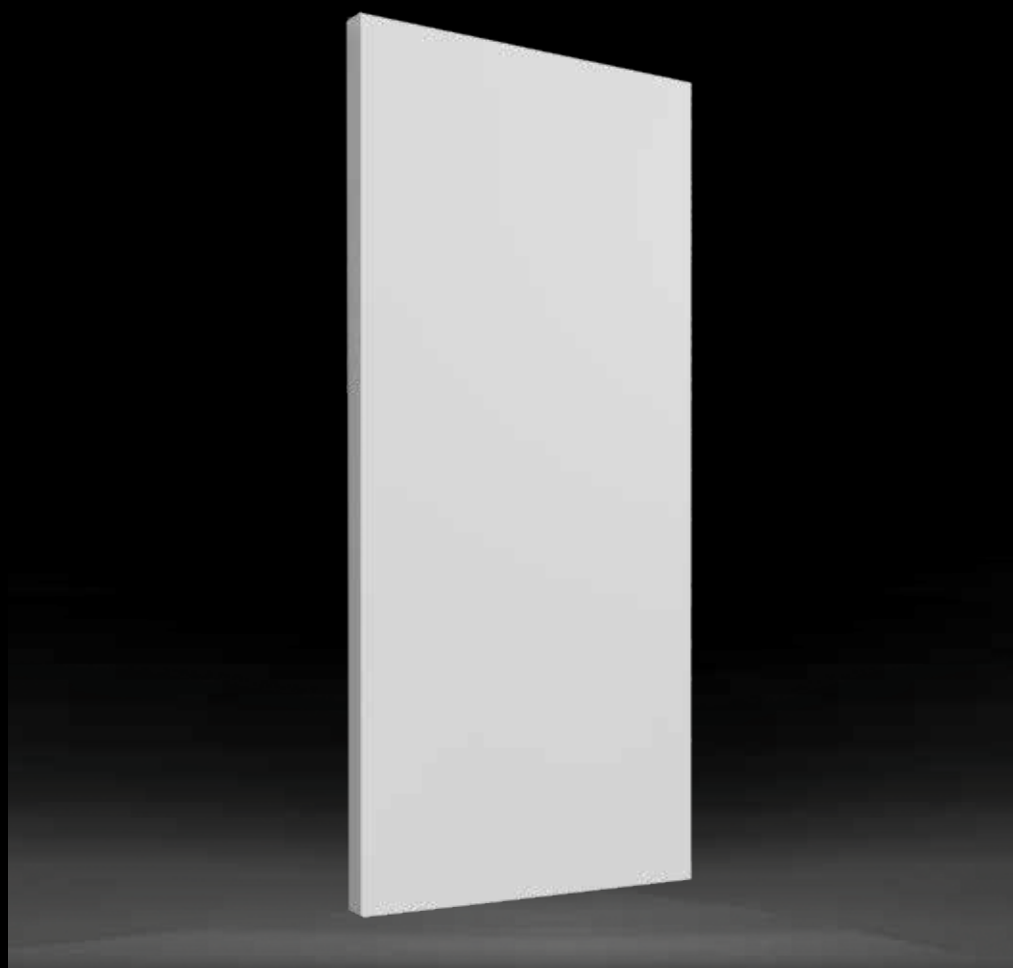




HENRAD

DISCOVER RAGGIO



ELECTRICAL IR-PANEL

GENERAL INFORMATION

RAGGIO

The Raggio provides natural, evenly distributed heat thanks to the transmission of infrared rays.

| | |
|-----------------|---|
| Product: | Electric infrared panel |
| Pre-installed: | 1,2 m insulated cable with plug |
| Also supplied: | Brackets, screws, plugs and manual |
| Control: | The IR-panel is delivered without thermostat. It must be installed with an intelligent third party electric smart plug. The control options of the plug must comply with EcoDesign 2018 (EU Regulation 2015/1188). |
| Packaging: | Every IR-panel is sturdily packaged in high-quality cardboard. The IR-panel's characteristics are shown on the label: electric power - height – length. |
| Warranty: | 10 years for the IR-panel and 2 years for the electrical components, as long as the installation instructions have been followed, Henrad's warranty conditions have been met and the IR-panel is installed outside the splash area. |
| Paint process: | All IR-panels are degreased, phosphated and powder-coated |
| Colours: | Traffic white or anthracite grey |
| Technical data: | Voltage 230V ~50Hz, IP34, Class II |
| Heights: | 1.218 1.540 1.740 mm |
| Lengths: | 530 580 630 mm |
| Depth: | 50 mm |
| Output: | 500 700 1.000 W |

| Height | Length | Output | Art. N°. | Colour |
|--------------|-------------|----------------|-----------------|-----------------|
| H1218 | L530 | 500 W | 7101B1218010530 | Traffic white |
| | | | 7101D1218010530 | Anthracite grey |
| H1540 | L580 | 700 W | 7101B1540010580 | Traffic white |
| | | | 7101D1540010580 | Anthracite grey |
| H1740 | L630 | 1.000 W | 7101B1740010630 | Traffic white |
| | | | 7101D1740010630 | Anthracite grey |



ELECTRICAL IR-PANEL

MOUNTING AND INSTALLATION

Since the Raggio is a class II heater with an IP34 protection rating, it can be installed as such, in volume 2 or 3 of the bathroom (see figure), provided that it is shielded from water splashes and that the IR-panel is out reach of persons in the bath or under the shower.

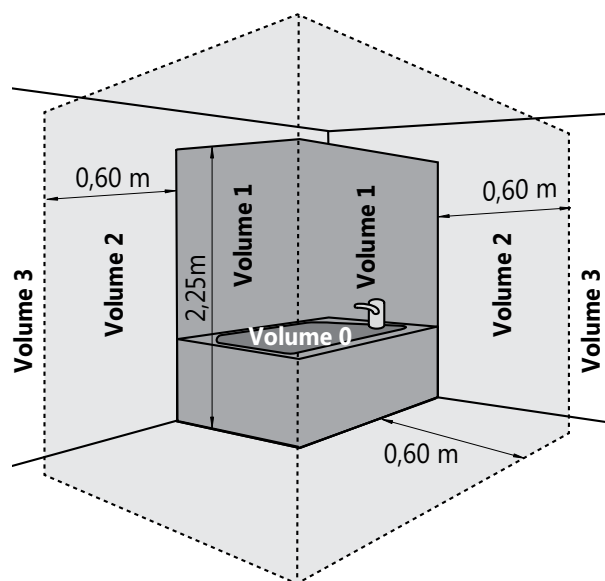
Furthermore, when installed in volume 2, the IR-panel must additionally be shielded by means of a fixed wall.

The IR-panel must be installed vertically and the electrical wire in the lower section. It is prohibited to install the device with the electrical wire in the upper section or on the side.

The appliance is insulated according to class II and is therefore not earthed. It needs to be powered by a single-phased current of 230V ~50 Hz.

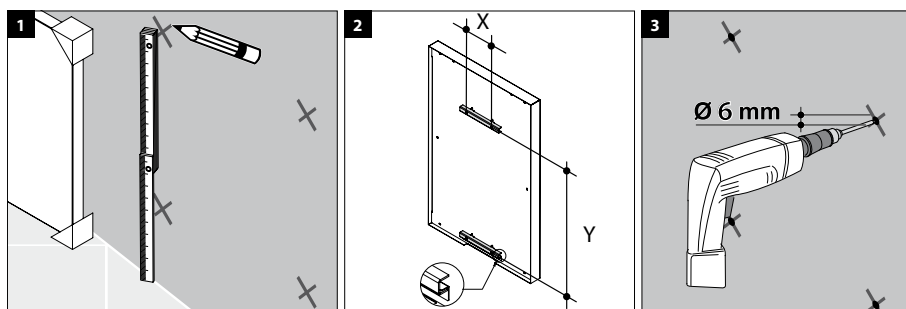
The plug should be connected to a wall socket placed in volume 3.

The IR-panel is delivered without thermostat. It must be installed with an intelligent third party electric smart plug. The control options of the plug must comply with EcoDesign 2018 (EU Regulation 2015/1188).

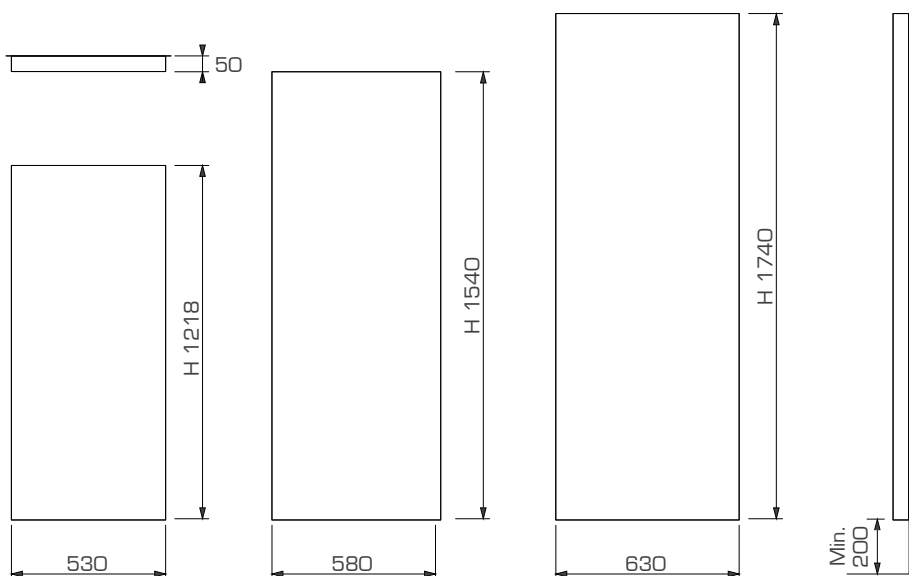
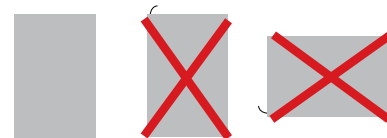


ATTENTION:

In France, the installation of electric IR-panels with plugs is prohibited.



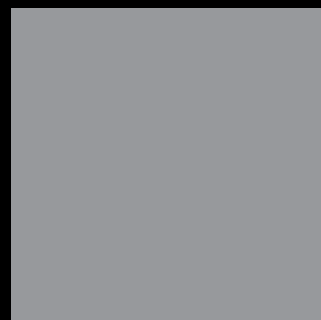
| W | X | Y |
|------|-----|------|
| 500 | 130 | 980 |
| 700 | 130 | 1302 |
| 1000 | 260 | 1502 |



The assembly instructions are available on [our website](#), technical data of Raggio or via the QR-code:



Australia • Belgium • Cyprus • Czechia • France • Germany • Greece • Iceland • Lithuania
Luxembourg • Norway • Poland • Slovenia • Sweden • The Netherlands • Tunisia • Ukraine



HENRAD

Henrad nv
Welvaartstraat 14 box 6 • 2200 Herentals • Belgium

WWW.HENRAD.EU

